

TAp63alpha / deltaNp63alpha Antibody (C-Term)
Peptide-affinity purified goat antibody
Catalog # AF3482a**Specification**

TAp63alpha / deltaNp63alpha Antibody (C-Term) - Product Information

Application	WB, E
Primary Accession	Q9H3D4
Other Accession	NP_003713.3 , NP_001108452.1 , 8626 , 22061 (mouse), 246334 (rat)
Reactivity	Human, Mouse, Rat
Predicted	Pig, Dog
Host	Goat
Clonality	Polyclonal
Concentration	0.5 mg/ml
Isotype	IgG
Calculated MW	76785

TAp63alpha / deltaNp63alpha Antibody (C-Term) - Additional Information**Gene ID** 8626**Other Names**

Tumor protein 63, p63, Chronic ulcerative stomatitis protein, CUSP, Keratinocyte transcription factor KET, Transformation-related protein 63, TP63, Tumor protein p73-like, p73L, p40, p51, TP63, KET, P63, P73H, P73L, TP73L

Dilution

WB~~1:1000
E~~N/A

Format

0.5 mg/ml in Tris saline, 0.02% sodium azide, pH7.3 with 0.5% bovine serum albumin

Storage

Maintain refrigerated at 2-8°C for up to 6 months. For long term storage store at -20°C in small aliquots to prevent freeze-thaw cycles.

Precautions

TAp63alpha / deltaNp63alpha Antibody (C-Term) is for research use only and not for use in diagnostic or therapeutic procedures.

TAp63alpha / deltaNp63alpha Antibody (C-Term) - Protein Information**Name** TP63**Synonyms** KET, P63, P73H, P73L, TP73L

Function

Acts as a sequence specific DNA binding transcriptional activator or repressor. The isoforms contain a varying set of transactivation and auto-regulating transactivation inhibiting domains thus showing an isoform specific activity. Isoform 2 activates RIPK4 transcription. May be required in conjunction with TP73/p73 for initiation of p53/TP53 dependent apoptosis in response to genotoxic insults and the presence of activated oncogenes. Involved in Notch signaling by probably inducing JAG1 and JAG2. Plays a role in the regulation of epithelial morphogenesis. The ratio of DeltaN-type and TA*-type isoforms may govern the maintenance of epithelial stem cell compartments and regulate the initiation of epithelial stratification from the undifferentiated embryonal ectoderm. Required for limb formation from the apical ectodermal ridge. Activates transcription of the p21 promoter.

Cellular Location

Nucleus

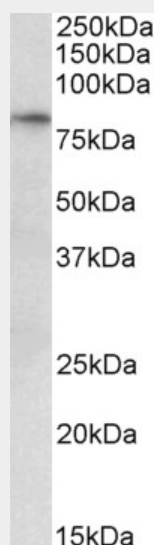
Tissue Location

Widely expressed, notably in heart, kidney, placenta, prostate, skeletal muscle, testis and thymus, although the precise isoform varies according to tissue type. Progenitor cell layers of skin, breast, eye and prostate express high levels of DeltaN-type isoforms. Isoform 10 is predominantly expressed in skin squamous cell carcinomas, but not in normal skin tissues

TAp63alpha / deltaNp63alpha Antibody (C-Term) - Protocols

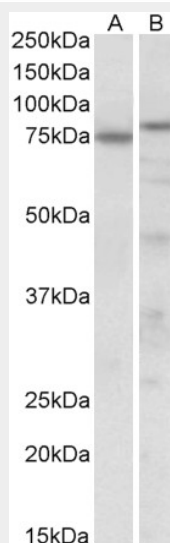
Provided below are standard protocols that you may find useful for product applications.

- [Western Blot](#)
- [Blocking Peptides](#)
- [Dot Blot](#)
- [Immunohistochemistry](#)
- [Immunofluorescence](#)
- [Immunoprecipitation](#)
- [Flow Cytometry](#)
- [Cell Culture](#)

TAp63alpha / deltaNp63alpha Antibody (C-Term) - Images

AF3482a (0.3 µg/ml) staining of Human Heart lysate (35 µg protein in RIPA buffer). Primary

incubation was 1 hour. Detected by chemiluminescence.



AF3482a (0.3 µg/ml) staining of Mouse (A) and Rat (B) Heart lysate (35 µg protein in RIPA buffer). Primary incubation was 1 hour. Detected by chemiluminescence.

TAp63alpha / deltaNp63alpha Antibody (C-Term) - Background

This antibody is expected to recognize isoform 1 (NP_003713.3) and isoform 4 (NP_001108452.1) of TP63 .

TAp63alpha / deltaNp63alpha Antibody (C-Term) - References

Variation in TP63 is associated with lung adenocarcinoma susceptibility in Japanese and Korean populations. Miki D, Kubo M, Takahashi A, Yoon KA, Kim J, Lee GK, Zo JI, Lee JS, Hosono N, Morizono T, Tsunoda T, Kamatani N, Chayama K, Takahashi T, Inazawa J, Nakamura Y, Daigo Y, Nature genetics 2010 Oct 42 (10): 893-6. PMID: 20871597